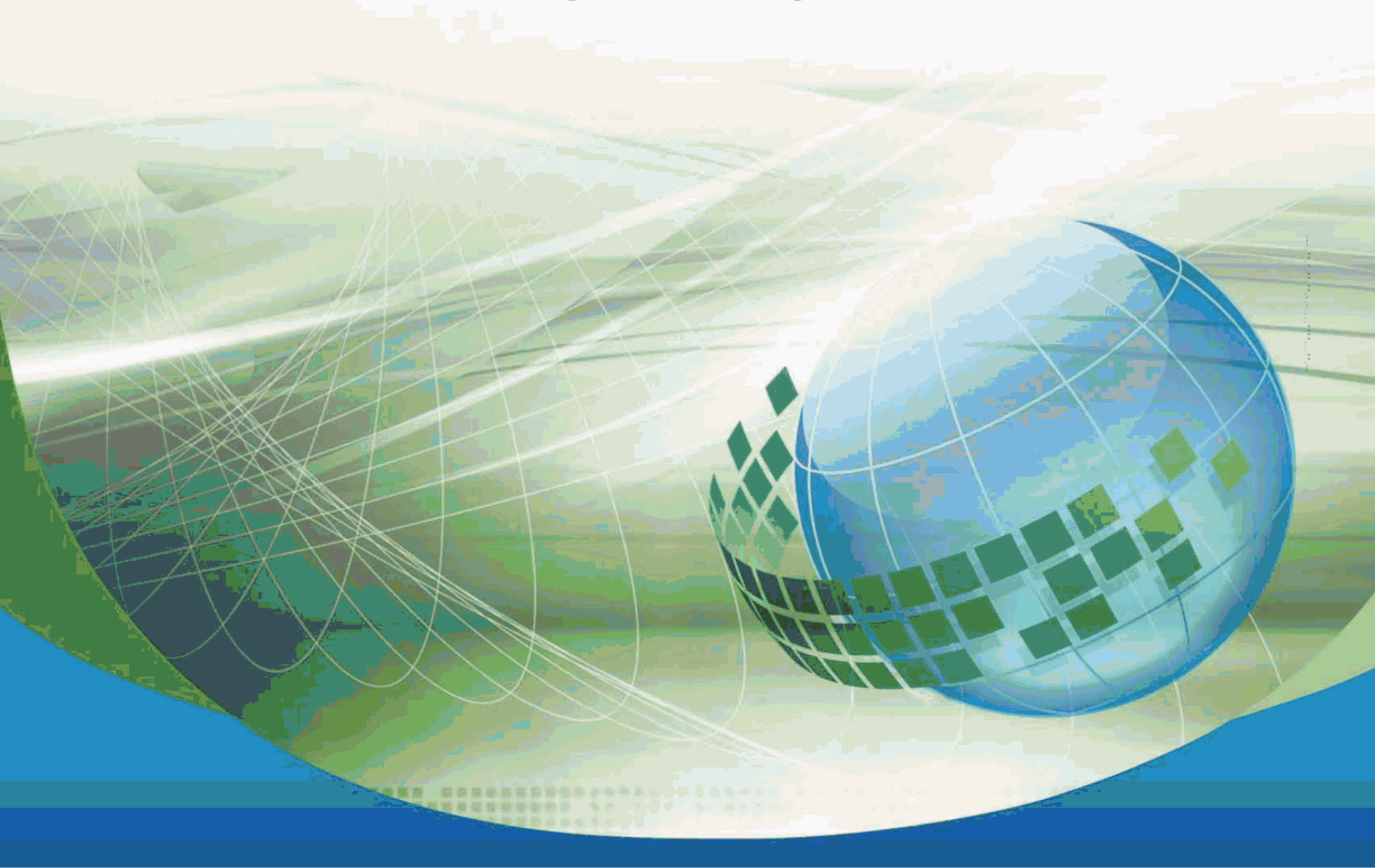




**ASME A112.3.4-2013/
CSA B45.9-13**

Plumbing fixtures with pumped waste and macerating toilet systems



Legal Notice for Harmonized Standard Jointly Developed by ASME and CSA Group

Intellectual property rights and ownership

As between American Society of Mechanical Engineers ("ASME") and Canadian Standards Association (Operating as "CSA Group") (collectively "ASME and CSA Group") and the users of this document (whether it be in printed or electronic form), ASME and CSA Group are the joint owners of all works contained herein that are protected by copyright, all trade-marks (except as otherwise noted to the contrary), and all inventions and trade secrets that may be contained in this document, whether or not such inventions and trade secrets are protected by patents and applications for patents. The unauthorized use, modification, copying, or disclosure of this document may violate laws that protect the intellectual property of ASME and CSA Group and may give rise to a right in ASME and CSA Group to seek legal redress for such use, modification, copying, or disclosure. ASME and CSA Group reserve all intellectual property rights in this document.

Disclaimer and exclusion of liability

This document is provided without any representations, warranties, or conditions of any kind, express or implied, including, without limitation, implied warranties or conditions concerning this document's fitness for a particular purpose or use, its merchantability, or its non-infringement of any third party's intellectual property rights. ASME and CSA Group do not warrant the accuracy, completeness, or currency of any of the information published in this document. ASME and CSA Group make no representations or warranties regarding this document's compliance with any applicable statute, rule, or regulation.

IN NO EVENT SHALL ASME AND CSA GROUP, THEIR RESPECTIVE VOLUNTEERS, MEMBERS, SUBSIDIARIES, OR AFFILIATED COMPANIES, OR THEIR EMPLOYEES, DIRECTORS, OR OFFICERS, BE LIABLE FOR ANY DIRECT, INDIRECT, OR INCIDENTAL DAMAGES, INJURY, LOSS, COSTS, OR EXPENSES, HOWSOEVER CAUSED, INCLUDING BUT NOT LIMITED TO SPECIAL OR CONSEQUENTIAL DAMAGES, LOST REVENUE, BUSINESS INTERRUPTION, LOST OR DAMAGED DATA, OR ANY OTHER COMMERCIAL OR ECONOMIC LOSS, WHETHER BASED IN CONTRACT, TORT (INCLUDING NEGLIGENCE), OR ANY OTHER THEORY OF LIABILITY, ARISING OUT OF OR RESULTING FROM ACCESS TO OR POSSESSION OR USE OF THIS DOCUMENT, EVEN IF ASME OR CSA GROUP HAVE BEEN ADVISED OF THE POSSIBILITY OF SUCH DAMAGES, INJURY, LOSS, COSTS, OR EXPENSES.

In publishing and making this document available, ASME and CSA Group are not undertaking to render professional or other services for or on behalf of any person or entity or to perform any duty owed by any person or entity to another person or entity. The information in this document is directed to those who have the appropriate degree of experience to use and apply its contents, and ASME and CSA Group accept no responsibility whatsoever arising in any way from any and all use of or reliance on the information contained in this document.

ASME and CSA Group have no power, nor do they undertake, to enforce compliance with the contents of the standards or other documents they jointly publish.

Authorized use of this document

This document is being provided by ASME and CSA Group for informational and non-commercial use only. The user of this document is authorized to do only the following:

If this document is in electronic form:

- load this document onto a computer for the sole purpose of reviewing it;
- search and browse this document; and
- print this document if it is in PDF format.

Limited copies of this document in print or paper form may be distributed only to persons who are authorized by ASME and CSA Group to have such copies, and only if this Legal Notice appears on each such copy.

In addition, users may not and may not permit others to

- alter this document in any way or remove this Legal Notice from the attached standard;
- sell this document without authorization from ASME and CSA Group ; or
- make an electronic copy of this document.

If you do not agree with any of the terms and conditions contained in this Legal Notice, you may not load or use this document or make any copies of the contents hereof, and if you do make such copies, you are required to destroy them immediately. Use of this document constitutes your acceptance of the terms and conditions of this Legal Notice.



Standards Update Service

ASME A112.3.4-2013/CSA B45.9-13 December 2013

Title: *Plumbing fixtures with pumped waste and macerating toilet systems*

Pagination: **19 pages** (xii preliminary and 7 text), each dated **December 2013**

To register for e-mail notification about any updates to this publication

- go to **shop.csa.ca**
- click on **CSA Update Service**

The **List ID** that you will need to register for updates to this publication is **2422100**.

If you require assistance, please e-mail techsupport@csagroup.org or call 416-747-2233.

Visit CSA Group's policy on privacy at csagroup.org/legal to find out how we protect your personal information.

Copyright ASME International
Provided by IHS under license with ASME
No reproduction or networking permitted without license from IHS

ASME A112.3.4-2013/CSA B45.9-13
***Plumbing fixtures with pumped waste
and macerating toilet systems***



™A trade-mark of the Canadian Standards Association, operating as "CSA Group"

*Published in December 2013 by CSA Group
A not-for-profit private sector organization
5060 Spectrum Way, Suite 100, Mississauga, Ontario, Canada L4W 5N6
1-800-463-6727 • 416-747-4044*

Visit our Online Store at shop.csa.ca

Commitment for Amendments

This Standard is issued jointly by the American Society of Mechanical Engineers (ASME) and the Canadian Standards Association (Operating as “CSA Group”). Amendments to this Standard will be made only after processing according to the Standards writing procedures of both ASME and CSA Group.

The American Society of Mechanical Engineers
(ASME)
Two Park Avenue
New York, NY 10016-5990
USA
www.asme.org

ISBN 978-0-7918-6917-8

© Copyright 2013

The 2013 edition of this Standard is being issued with an automatic addenda subscription service. The use of addenda allows revisions made in response to public review comments or committee actions to be published as necessary.

Published in December 2013 by CSA Group
A not-for-profit private sector organization
5060 Spectrum Way, Suite 100
Mississauga, Ontario, Canada
L4W 5N6
1-800-463-6727 • 416-747-4044

Visit the CSA Online Store at shop.csa.ca

ISBN 978-1-77139-031-6

© 2013 CSA Group

All rights reserved. No part of this publication may be reproduced in any form whatsoever without the prior permission of the publisher.

Contents

ASME A112 Standards Committee on Plumbing Materials and Equipment v

ASME A112.19.2 Project Team on Vitreous China Plumbing Fixtures (A112) vii

CSA Technical Committee on Plumbing Fixtures (B45) viii

CSA/ASME Harmonization Task Group on Plumbing Fixtures (B45-JHTG) x

Preface xi

1 Scope 1

2 Reference publications 2

3 Definitions and abbreviations 3

3.1 Definitions 3

3.2 Abbreviations 3

4 Material requirements and general requirements 3

4.1 Materials 3

4.1.1 Pumps 3

4.1.2 Gaskets 3

4.1.3 Electrical requirements 4

4.1.4 Water closets 4

4.1.5 Lavatories and sinks 4

4.1.6 Bathtubs 4

4.1.7 Showers 4

4.1.8 Macerating system housing 4

4.1.9 Clamps 4

4.2 General requirements 4

4.2.1 Fastening 4

4.2.2 Return of discharged wastes 4

4.2.3 Accessibility 4

4.2.4 Function 5

4.2.5 Hydrostatic pressure integrity 5

4.2.6 Minimum size 5

4.2.7 Venting 5

4.3 Pumped waste components 5

4.3.1 Pump 5

4.3.2 Discharge pipe 5

4.3.3 Backflow prevention 5

4.3.4 Venting not required 5

5 Performance tests 5

5.1 Cycle testing 5

5.1.1 Test method 5

5.1.2 Acceptance criteria 6

5.2 Paper test of the assembled unit 6

5.2.1 Set-up 6

5.2.2 Test procedure 6

5.2.3 Performance requirement 6

- 5.3 Hydrostatic pressure test of the check valve 6
- 5.3.1 Test method 6
- 5.3.2 Performance requirement 6
- 5.4 Hydrostatic pressure test of the holding tank assembly 7
- 5.4.1 Test method 7
- 5.4.2 Performance requirement 7
- 5.5 Discharge test 7
- 5.5.1 Test method 7
- 5.5.2 Performance 7

6 Marking and instruction requirements 7

- 6.1 Marking 7
- 6.2 Instructions 7
- 6.2.1 Installation 7
- 6.2.2 Owner/operator instructions 7

ASME A112 Standards Committee on Plumbing Materials and Equipment

D.W. Viola	IAPMO, Mokena, Illinois, USA	<i>Chair</i>
S. Rawalpindiwala	Kohler Co., Kohler, Wisconsin, USA	<i>Vice-Chair</i>
R.K. Adler	City of San Jose, San Jose, California, USA	
S.F. Aridi	NSF International, Ann Arbor, Michigan, USA	
J.A. Ballanco	JB Engineering & Code Consulting, PC, Munster, Indiana, USA	
J.E. Bertrand	Moen Incorporated, North Olmsted, Ohio, USA	
M.N. Burgess	Burgess Group Incorporated, San Diego, California, USA	
M. Campos	ICC Evaluation Service, LLC, Whittier, California, USA	
S.L. Cavanaugh	Cavanaugh Consulting, Santa Fe, New Mexico, USA	
W.E. Chapin	Professional Code Consulting, LLC, Cullman, Alabama, USA	
P.V. DeMarco	IAPMO, Dayton, New Jersey, USA	
N.E. Dickey	CSA Group, Cleveland, Ohio, USA	
G.S. Duren	Code Compliance, Inc., South Pasadena, Florida, USA	
T. Eberhardy	Bradley Fixtures Corporation, Menomonee Falls, Wisconsin, USA	
R. Emmerson	Consultant, Mundelein, Illinois, USA	
R.L. George	Plumb-Tech Design and Consulting Services L.L.C, Newport, Michigan, USA	

G.W. Harrison	Wayne Harrison Consulting, Edmond, Oklahoma, USA	
L. Himmelblau	Chicago Faucet, Des Plaines, Illinois, USA	
J. Kendzel	American Society of Plumbing Engineers, Rosemont, Illinois, USA	
J.M. Koeller	Koeller and Co., Yorba Linda, California, USA	
N.M. Kummerlen	Consultant, Lorain, Ohio, USA	
C.J. Lagan	American Standard, Piscataway, New Jersey, USA	
J.W. Lauer	Sloan Valve Company, Huntington Beach, California, USA	
W.H. Levan	Cast Iron Soil Pipe Institute, Hixon, Georgia, USA	
S. Rawalpindiwala	Kohler Co., Kohler, Wisconsin, USA	
S.A. Remedios	Remedios Consulting LLC, Noblesville, Indiana, USA	
G.L. Simmons	Charlotte Pipe & Foundry, Charlotte, North Carolina, USA	
L.J. Swatkowski Jr.	Plumbing Manufacturers International (PMI), Rolling Meadows, Illinois, USA	
J.C. Watson	Elkay, Broadview, Illinois, USA	
W.C. Whitehead	Whitehead Consulting Services, Peabody, Massachusetts, USA	
A.L. Guzman	American Society of Mechanical Engineers, New York, New York, USA	<i>Secretary</i>

ASME A112.3.4 Project Team on Macerating Pumped Waste Systems (A112)

J. Bouwer	Euro Sales Inc., Elora, Ontario	<i>Chair</i>
J.A. Ballanco	JB Engineering & Code Consulting PC, Munster, Indiana, USA	
M. Campos	ICC Evaluation Service, LLC, Whittier, California, USA	
P.V. DeMarco	IAPMO, Dayton, New Jersey, USA	
N.E. Dickey	CSA Group, Cleveland, Ohio, USA	
S. Rawalpindiwala	Kohler Co., Kohler, Wisconsin, USA	

CSA Technical Committee on Plumbing Fixtures (B45)

S. Rawalpindiwala	Kohler Co., Kohler, Wisconsin, USA	<i>Chair</i>
F. Lemieux	Health Canada, Ottawa, Ontario	<i>Vice-Chair</i>
J. Bertand	Moen Incorporated, North Olmsted, Ohio, USA	
M. Campos	International Code Council, Whittier, California, USA	<i>Associate</i>
S.L. Cavanaugh	Cavanaugh Consulting, Santa Fe, New Mexico, USA	
I.W. Chang	Intertek, Coquitlam, British Columbia	<i>Associate</i>
M. Chojnacka	City of Toronto, Toronto, Ontario	
Y. Duchesne	Régie du bâtiment du Québec, Québec, Québec	
T. Eberhardy	Bradley Corporation, Menomonee Falls, Wisconsin, USA	<i>Associate</i>
T.D. Ellison	Cheffell Associates, Rockland, Ontario	
K. Ernst	Ontario Oakville Stamping & Bending Limited, Oakville, Ontario	
A. Esteban	Conagua, Delegación Coyoacán, Distrito Federal, México	<i>Associate</i>
W. Falcomer	City of Ottawa, Ottawa, Ontario	
F. Fernández	Toto USA Inc., Ontario, California, USA	
D. Green	National Research Council Canada, Ottawa, Ontario	
R. Hildebrand	Regional Municipality of Waterloo, Kitchener, Ontario	
L. Himmelblau	Chicago Faucets Company, Des Plaines, Illinois, USA	

E. Ho	IAPMO Research and Testing, Inc., Markham, Ontario	<i>Associate</i>
K.S. Hui	Ontario Ministry of Municipal Affairs and Housing, Toronto, Ontario	
J. Knapton	SAIT Polytechnic, Calgary, Alberta	
J.M. Koeller	Koeller and Company, Yorba Linda, California, USA	
N.M. Kummerlen	Lorain, Ohio, USA	
C.J. Lagan	American Standard Brands, Piscataway, New Jersey, USA	
B. Lagueux	Saint-Nicolas, Québec Consumer Representative	
J. Manente	Regional Municipality of Peel, Brampton, Ontario	<i>Associate</i>
D. Mabry	Fluidmaster Inc., San Juan Capistrano, California, USA	<i>Associate</i>
S.E. Martin	International Code Council, Pittsburgh, Pennsylvania, USA	<i>Associate</i>
S. Marxen	American Society of Sanitary Engineering (ASSE), Westlake, Ohio, USA	
W. McCaffrey	Alberta Municipal Affairs, Red Deer, Alberta	
T.J. McCann	Department of National Defence, Ottawa, Ontario	
D. McNamara	Franke Kindred Canada Limited, Midland, Ontario	
D. Orton	NSF International, Ann Arbor, Michigan, USA	
S.A. Remedios	Remedios Consulting LLC, Noblesville, Indiana, USA	
T. Stessman	Kohler Co., Kohler, Wisconsin, USA	<i>Associate</i>
C. Trendelman	Delta Faucet Company, Indianapolis, Indiana, USA	<i>Associate</i>
C. Wright	Ontario Pipe Trades, Dundalk, Ontario	
L. Pilla	CSA Group, Mississauga, Ontario	<i>Project Manager</i>

CSA/ASME Harmonization Task Group on Plumbing Fixtures (B45-JHTG)

C.J. Lagan	American Standard Brands, Piscataway, New Jersey, USA	<i>Co-Chair</i>
F. Lemieux	Health Canada, Ottawa, Ontario	<i>Co-Chair</i>
I.W. Chang	Intertek, Coquitlam, British Columbia	
M. Chojnacka	City of Toronto, Toronto, Ontario	
K. Ernst	Oakville Stamping & Bending Limited, Oakville, Ontario	
W. Falcomer	City of Ottawa, Ottawa, Ontario	
F. Fernández	Toto U.S.A. Inc., Ontario, California, USA	
L. Himmelblau	Chicago Faucets Company, Des Plaines, Illinois, USA	
E. Ho	IAPMO Research and Testing Inc., Markham, Ontario	
N. Kummerlen	Lorain, Ohio, USA	
B. Lagueux	Saint-Nicolas, Québec	
S.E. Martin	International Code Council, Pittsburgh, Pennsylvania, USA	
D. McNamara	Franke Kindred Canada Limited, Midland, Ontario	
S. Rawalpindiwala	Kohler Co., Kohler, Wisconsin, USA	
S.A. Remedios	Remedios Consulting LLC, Noblesville, Indiana, USA	
L. Pilla	CSA Group, Mississauga, Ontario	<i>Project Manager</i>

Preface

This is the first edition of ASME A112.3.4/CSA B45.9, *Plumbing fixtures with pumped waste and macerating toilet systems*. This Standard supersedes ASME A112.3.4-2000, *Macerating Toilet Systems and Related Components*, and CSA B45.9-2002, *Macerating Systems and Related Components*.

This Standard is considered suitable for use for conformity assessment within the stated scope of the Standard.

This Standard was prepared by the ASME/CSA Joint Harmonization Task Group on Plumbing Fixtures, under the jurisdiction of the ASME Standards Committee on Plumbing Materials and Equipment and the CSA Technical Committee on Plumbing Fixtures. The CSA Technical Committee operates under the jurisdiction of the CSA Strategic Steering Committee on Construction and Civil Infrastructure. This Standard has been formally approved by the ASME Standards Committee and the CSA Technical Committee. This Standard was approved as an American National Standard by the American National Standards Institute on December 30, 2013.

ASME Notes:

- (1) *This standard was developed under procedures accredited as meeting the criteria for American National Standards and it is an American National Standard. The Standards Committee that approved the code or standard was balanced to assure that individuals from competent and concerned interests have had an opportunity to participate. The proposed Standard was made available for public review and comment that provides an opportunity for additional public input from industry, academia, regulatory agencies, and the public-at-large.*
- (2) *ASME does not "approve," "rate," or "endorse" any item, construction, proprietary device, or activity.*
- (3) *ASME does not take any position with respect to the validity of any patent rights asserted in connection with any items mentioned in this document, and does not undertake to insure anyone utilizing a standard against liability for infringement of any applicable letters patent, nor assume any such liability. Users of a standard are expressly advised that determination of the validity of any such patent rights, and the risk of infringement of such rights, is entirely their own responsibility.*
- (4) *Participation by federal agency representative(s) or person(s) affiliated with industry is not to be interpreted as government or industry endorsement of this standard.*
- (5) *ASME accepts responsibility for only those interpretations of this document issued in accordance with the established ASME procedures and policies, which precludes the issuance of interpretations by individuals.*
- (6) *ASME issues written replies to inquiries concerning interpretation of technical aspects of this Standard. All inquiries regarding this Standard, including requests for interpretations, should be addressed to:
Secretary, A112 Standards Committee
The American Society of Mechanical Engineers
Two Park Avenue
New York, NY 10016-5990
A request for interpretation should be clear and unambiguous. The request should*
 - *cite the applicable edition of the Standard for which the interpretation is being requested.*
 - *phrase the question as a request for an interpretation of a specific requirement suitable for general understanding and use, not as a request for an approval of a proprietary design or situation. The inquirer may also include any plans or drawings, which are necessary to explain the question; however, they should not contain proprietary names or information.**ASME procedures provide for reconsideration of any interpretation when or if additional information that might affect an interpretation is available. Further, persons aggrieved by an interpretation may appeal to the cognizant ASME Committee.*

Interpretations are published on the ASME Web site under the Committee Pages at <http://www.asme.org/codes/> as they are issued.

CSA Notes:

- (1) *Use of the singular does not exclude the plural (and vice versa) when the sense allows.*
- (2) *Although the intended primary application of this Standard is stated in its Scope, it is important to note that it remains the responsibility of the users of the Standard to judge its suitability for their particular purpose.*

- (3) *This publication was developed by consensus, which is defined by CSA Policy governing standardization — Code of good practice for standardization as “substantial agreement. Consensus implies much more than a simple majority, but not necessarily unanimity”. It is consistent with this definition that a member may be included in the Technical Committee list and yet not be in full agreement with all clauses of this publication.*
- (4) *CSA Standards are subject to periodic review, and suggestions for their improvement will be referred to the appropriate committee.*
- (5) *All enquiries regarding this Standard, including requests for interpretation, should be addressed to Canadian Standards Association, 5060 Spectrum Way, Suite 100, Mississauga, Ontario, Canada L4W 5N6.*
Requests for interpretation should
- (a) *define the problem, making reference to the specific clause, and, where appropriate, include an illustrative sketch;*
 - (b) *provide an explanation of circumstances surrounding the actual field condition; and*
 - (c) *be phrased where possible to permit a specific “yes” or “no” answer.*
- Committee interpretations are processed in accordance with the CSA Directives and guidelines governing standardization and are published in CSA’s periodical Info Update, which is available on the CSA Web site at www.csa.ca.*

Attention is drawn to the possibility that some of the elements of this Standard may be the subject of patent rights. CSA is not to be held responsible for identifying any or all such patent rights. Users of this Standard are expressly advised that determination of the validity of any such patent rights is entirely their own responsibility.

ASME A112.3.4-2013/CSA B45.9-13

Plumbing fixtures with pumped waste and macerating toilet systems

1 Scope

1.1

This Standard establishes physical, performance, and testing requirements applicable to plumbing fixtures with pumped waste, macerating toilet systems, and related components. Such systems are intended to collect waste from a single fixture such as a water closet, lavatory, shower, or bathtub and pump these wastes to some point in the sanitary drainage system.

1.2

The purpose of this Standard is to establish a generally acceptable performance standard for pumped waste systems, macerating systems and related components for directly affixed water closets and other fixtures designed for above the-floor or in-floor installations.

1.3

A water closet connects to a macerating toilet system. Macerating toilet systems collect the waste from a single water closet, plus a lavatory, shower, bathtub, or a combination of these in the same room. Macerating systems grind and pump these macerated wastes to some point in the sanitary drainage system.

1.4

Pumped waste systems consist of three major components:

- (a) an automatic activation of the pumped waste system;
- (b) a drainage connection to the pump; and
- (c) a pump that pumps the waste to the gravity drainage system.

1.5

The macerating system comprises three major components:

- (a) a container that houses the operating mechanisms;
- (b) a pressure chamber that automatically or manually activates and deactivates the induction motor; and
- (c) an induction motor that drives the shredder blades and pump assembly, which is permitted to be combined into a single unit.

1.6

The use of alternate materials or methods is permitted, provided it can be demonstrated that such alternatives comply with the performance requirements of this Standard.

1.7

In this Standard, “shall” is used to express a requirement, i.e., a provision that the user is obliged to satisfy in order to comply with the standard; “should” is used to express a recommendation or that which is advised but not required; “may” is used to express an option or that which is permissible within the limits of the standard; and “can” is used to express possibility or capability.

Notes accompanying clauses do not include requirements or alternative requirements; the purpose of a note accompanying a clause is to separate from the text explanatory or informative material.

Notes to tables and figures are considered part of the table or figure and may be written as requirements.

Annexes are designated normative (mandatory) or informative (non-mandatory) to define their application.

1.8 Units of measurement

SI units are the units of record in Canada. In this Standard, the inch/pound units are shown in parentheses.

The values stated in each measurement system are equivalent in application; however, each system is to be used independently. Combining values from the two measurement systems can result in non-conformance with this Standard.

All references to gallons are to U.S. gallons.

2 Reference publications

This Standard refers to the following publications, and where such reference is made, it shall be to the edition listed below, including all amendments published thereto.

ASTM International (American Society for Testing and Materials)

C1173-10

Flexible Transition Couplings for Underground Piping Systems

CSA Group

CAN/CSA-C22.2 No. 108-01 (R2010)

Liquid pumps

CAN/CSA B602-10

Mechanical couplings for drain, waste, and vent pipe and sewer pipe

CSA Group/IAPMO (International Association of Plumbing and Mechanical Officials)

CSA B45.5-11/IAPMO Z124-2011

Plastic plumbing fixtures

ASME (The American Society of Mechanical Engineers)/CSA Group

ASME A112.19.1-2013/CSA B45.2-13

Enamelled cast iron and enamelled steel plumbing fixtures

ASME A112.19.2-2013/CSA B45.1-13

Ceramic plumbing fixtures

ASME A112.19.3-2008/CSA B45.4-08

Stainless steel plumbing fixtures

ASME (The American Society of Mechanical Engineers)

A112.19.15-2012

Bathtubs/whirlpool bathtubs with pressure sealed doors

UL (Underwriter's Laboratories)

UL 778-2010

Motor operated water pumps

3 Definitions and abbreviations

3.1 Definitions

The following definitions shall apply in this Standard:

Fixture — a device that receives water, waste matter, or both and directs these substances into a drainage system.

Integral — a cast or formed part of a fixture, e.g., a trap, seat, or tank.

Lavatory — a washbowl or basin.

Pressure —

Flowing pressure — the pressure in a water supply pipe at the inlet to an open valve.

Static pressure — the pressure in a water supply pipe at the inlet of a closed valve.

Sanitary — an aesthetic condition of cleanliness (not the state of being microbiologically clean).

Water closet — a fixture with a water-containing receptor that receives liquid and solid body waste and on actuation conveys the waste through an exposed integral trap into a drainage system.

Dual-flush water closet — a water closet incorporating a feature that allows the user to flush the water closet with either a reduced or a full volume of water.

Electro-hydraulic water closet — a water closet with a non-mechanical trap seal incorporating an electric motor and controller to facilitate flushing.

High-efficiency water closet (high-efficiency toilet) — a water closet with an average water consumption of 4.8 Lpf (1.28 gpf) when tested in accordance with ASME A112.19.2/CSA B45.1.

Note: *Dual-flush water closets with a maximum average water consumption of 4.8 Lpf (1.28 gpf) when tested in accordance with ASME A112.19.14 are also considered high-efficiency water closets.*

Low-consumption water closet — a water closet with an average water consumption of 6.0 Lpf (1.6 gpf) or less when tested in accordance with this Standard.

3.2 Abbreviations

The following abbreviations shall apply in this Standard:

gpf — gallons per flush

Lpf — litres per flush

4 Material requirements and general requirements

4.1 Materials

4.1.1 Pumps

Pumps shall comply with

- (a) CAN/CSA-C22.2 No. 108 or UL 778; and
- (b) [Clause 5](#) of this Standard.

4.1.2 Gaskets

Piping gaskets shall be watertight when tested according to [Clause 5](#).

4.1.3 Electrical requirements

The electrical system in the macerating unit shall comply with the applicable CSA Group or UL electrical standards.

4.1.4 Water closets

Water closets that connect with the macerating system shall comply with ASME A112.19.2/CSA B45.1, or CSA B45.5-/IAPMO Z124. The performance of the water closet shall be tested accordingly prior to connection to the macerating unit. The drain line carry test shall not be required. Water closets with an integral grinder/pump system shall be tested as a system.

4.1.5 Lavatories and sinks

Lavatories or sinks that are a part of a pumped waste system or that connect to a macerating toilet system shall comply with ASME A112.19.1/CSA B45.2, ASME A112.19.2/CSA B45.1, ASME A112.19.3/CSA B45.4, or CSA B45.5-10/IAPMO Z124.10. The lavatory or sink shall not be required to conform to the drainage opening area and drain diameter of these standards.

4.1.6 Bathtubs

Bathtubs that are a part of a pumped waste system or that connect to a macerating toilet system shall comply with ASME A112.19.1/CSA B45.2, ASME A112.19.3/CSA B45.4, ASME A112.19.15, or CSA B45.5-10/IAPMO Z124.10. The bathtub shall not be required to conform to the drainage opening area and drain diameter of these standards.

4.1.7 Showers

Showers that are a part of a pumped waste system or that connect to a macerating toilet system shall comply with ASME A112.19.1/CSA B45.2, ASME A112.19.2/CSA B45.1, ASME A112.19.3/CSA B45.4, or CSA B45.5-10/IAPMO Z124.10. Showers may also be field fabricated in accordance with the applicable plumbing code. The shower shall not be required to conform to the drainage opening area and drain diameter of these standards.

4.1.8 Macerating system housing

The housing tank assembly shall be watertight, leakproof, and protected from backflow of sewage. The housing tank shall be free from cracks, porosity, chips, flash, or other significant defects that affect the performance, appearance, or serviceability of the system. The tank assembly shall be capable of withstanding a hydrostatic pressure as described in [Clause 5.4](#). The tank shall comply with the resistance to staining, the wear and cleanability, and the chemical resistance tests of CSA B45.5-10/IAPMO Z124.10 for plastic sumps.

4.1.9 Clamps

Clamps used to connect the fixture with the holding tank shall comply with the band requirements of either ASTM C1173 or CAN/CSA-B602.

4.2 General requirements

4.2.1 Fastening

A means to fasten the water closet to the holding tank shall be provided.

4.2.2 Return of discharged wastes

A check valve shall be provided with the macerating system to prevent the return of discharged wastes to the macerating tank.

4.2.3 Accessibility

The holding tank shall allow access to the internal working components.

4.2.4 Function

The unit shall dispose of the contents of the water closet upon activation of the flushing mechanism. The macerating pump shall be capable of discharging the ground-up waste a distance of 3.7 m (12 ft) in vertical height as covered in [Clause 5.2](#).

4.2.5 Hydrostatic pressure integrity

The check valve in the holding tank shall be capable of resisting a hydrostatic pressure test as defined in [Clause 5.3](#).

4.2.6 Minimum size

The minimum size of the pressure portion of the piping shall be 19 mm (0.75 in) inside diameter.

4.2.7 Venting

The sump shall be vented according to the manufacturer's instructions with a minimum vent size of not less than 32 mm (1.25 in) inside diameter.

Note: This is not considered to be a sewage sump.

4.3 Pumped waste components

4.3.1 Pump

The pump for pumped waste systems shall comply with either UL 778 or CSA C22.2 No. 108 and meet the performance requirements for permanently installed pumps.

4.3.1.1 Pump activation and function

The pump shall automatically activate to discharge the contents of the fixture when the fixture is used. The pump system shall prevent waste from rising in the fixture. The pump shall be capable of discharging the waste to a vertical height of 3.7 m (12 ft) as covered in [Clause 5.2](#).

4.3.2 Discharge pipe

The discharge pipe from the pump of a pumped waste system shall be a minimum size of 19 mm (0.75 in) nominal.

4.3.3 Backflow prevention

A check valve shall be provided with the pumped waste system to prevent the return of discharged waste to the plumbing fixture. The check valve shall be capable of resisting a 3.7 m (12 ft) column of water head pressure when tested in accordance with [Clause 5.3](#).

4.3.4 Venting not required

A vent shall not be required for a pumped waste system.

5 Performance tests

5.1 Cycle testing

5.1.1 Test method

The macerating pump and pump for a lavatory or sink pumped waste system shall be "on/off" tested 50,000 times. The pump for a shower or bathtub pumped waste shall be cycled tested "on/off" for 5,000 cycles. One cycle shall be "on" for 5 sec and "off" for 5 sec.

5.1.2 Acceptance criteria

Upon completion of the “on/off” or cycle testing, macerating systems shall demonstrate the ability to meet the performance requirements as outlined in [Clauses 5.2](#) and [5.3](#); pumped waste systems shall demonstrate the ability to meet the performance requirements outlined in [Clauses 5.3](#) and [5.4](#).

5.2 Paper test of the assembled unit

5.2.1 Set-up

The paper test shall be conducted as follows:

- (a) The macerating unit and water closet shall be assembled in accordance with the manufacturer’s instructions.
- (b) The discharge piping from the unit shall be installed to the maximum elevation and horizontal run stated by the manufacturer.
- (c) The check valve shall be installed within the discharge line in accordance with the manufacturer’s instructions.
- (d) Discharge pipe size as recommended by the manufacturer shall be installed vertically for 3.7 m (12 ft) of discharge and then directed to a safe place of discharge.
- (e) The water closet shall be filled with water and pressurized to the minimum pressure recommended by the manufacturer.
- (f) Two thousand sheets of single-ply toilet paper shall be weighed, then separated into four sets of 50 ten-sheet lots.

5.2.2 Test procedure

- (a) Ten sheets of single-ply toilet paper at a time shall be distributed evenly in the water closet bowl and the unit shall be flushed.
- (b) With each successive flush, there shall be no evidence of paper returning to the bowl.
- (c) After conducting 50 consecutive flush tests, three additional flushes without paper shall be made.
- (d) The water closet shall then be removed from the housing unit and the internal walls and bottom of the housing shall be inspected for any collection of paper.
- (e) The test shall continue to be conducted for an additional 150 cycles, stopping at every 50 paper/three no-paper cycle in order to inspect the internal housing for paper collection.
- (f) After completion of the cycle tests, all paper on the wall and bottom of the housing unit shall be removed, dried, and weighed.

5.2.3 Performance requirement

The failure of the unit to meet the following criteria shall be cause for rejection of the unit:

- (a) After each successive flush in [Clause 5.2.2\(a\)](#), (d), and (e), there shall be no evidence of paper returning to the bowl.
- (b) Not more than 5% of the total weight of the 2000 sheets shall remain clinging to the wall and bottom of the housing after testing.
- (c) If a grille is provided, there shall be no more than 50% blockage of the surface area, as determined by visual inspection.

5.3 Hydrostatic pressure test of the check valve

5.3.1 Test method

The holding tank or pumped waste system shall be installed in accordance with the manufacturer’s instructions. The check or non-return valve for either the tank or pumped waste system shall be subjected to a 3.7 m (12 ft) column of water head pressure.

5.3.2 Performance requirement

The check or non-return valve shall not leak.

5.4 Hydrostatic pressure test of the holding tank assembly

5.4.1 Test method

The holding tank assembly for the macerating toilet system shall be installed in accordance with the manufacturer's instructions.

The inlet connectors shall be installed, with the inlets to the connectors plugged or sealed. All other openings shall be sealed. The complete tank assembly shall be subjected to a hydrostatic pressure equivalent to 35.8 kPa (5.2 psi) or a pressure equal to the maximum discharge elevation recommended by the manufacturer, whichever is greater, at 23 °C (73°F).

5.4.2 Performance requirement

The tank assembly shall not leak. Permanent distortion that does not affect the performance and function of the unit is acceptable.

5.5 Discharge test

5.5.1 Test method

The discharge test shall be conducted as follows:

- (a) The pumped waste system shall be connected to the fixture for which it is designed.
- (b) The pumped waste system shall be installed in accordance with the manufacturer's instructions.
- (c) The discharge pipe shall rise 3.7 m (12 ft) and discharge to a safe place.
- (d) The water supply to the fixture shall be turned on at the maximum flow rate for the fixture.
- (e) Water shall flow into the fixture for 10 min.

Note: For bathtubs, the flow rate is based on the overhead shower.

5.5.2 Performance

Water shall run continuously down the drain and shall not rise in the fixture during the test.

6 Marking and instruction requirements

6.1 Marking

The pumped waste or macerating toilet system shall be marked with the following information:

- (a) the manufacturer's name or trademark;
- (b) the model number; and
- (c) "ASME A112.3.4/CSA B45.9".

6.2 Instructions

6.2.1 Installation

Installation instructions shall be provided with each unit, including such information as capacities, connections to the unit, electrical needs, other plumbing requirements, and related safety concerns. For macerating toilet systems, the installation instructions shall identify that a full-flow ball gate valve shall be installed downstream of the check valve and that all fixtures shall be on the same floor level.

6.2.2 Owner/operator instructions

Instructions for proper operation of the system shall be provided with the unit. The instructions shall indicate the proper use of the system and prohibited uses and applications of the system. The instructions shall be marked on the cover with instructions to the installer to leave the manual with the owner/operator for future reference.

CSA Group prints its publications on Rolland Enviro100, which contains 100% recycled post-consumer fibre, is EcoLogo and Processed Chlorine Free certified, and was manufactured using biogas energy.



ASME

ISBN 978-0-7918-6917-8



9 780791 869178



J1541Q

CSA

ISBN 978-1-77139-031-6